

高速氩弧焊接机

TURBO TIG WELDING MACHINE

提高厂内生产速度与焊接品质 Improving the productivity & Quality

缩短生产制程，降低生产成本 Shortening process & reducing cost

简化操作技术，减轻焊工负担 Simplifying the welding operations

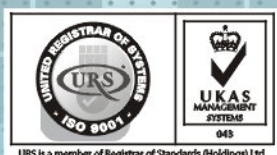


不开坡口可焊接材料厚度范围 Range of Square Butt Welding

- 钛 Titanium 3~16mm
- 不锈钢 Atainless Steel 3~14mm
- 合金钢 Alloy Steel 3~9mm
- 低碳钢 Low-Carbon Steel 3~9mm

不锈钢不开坡口焊接速度 Speed of SUS304 Welding (Square Butt Joint)

- 6mm \geq 900 mm/min
- 8mm \geq 600 mm/min
- 10mm \geq 450 mm/min
- 12mm \geq 300 mm/min
- 14mm \geq 150 mm/min



URS is a member of Registrar of Standards (Holdings) Ltd.



台灣電漿股份有限公司
TAIWAN PLASMA CORP.

<http://www.plasma.com.tw>

优点：

- 简易操作的焊接系统组合，不像操作等离子焊接机，需专业的师傅操作；Turbo Tig高速氩弧焊机，基本焊工来当操作员，训练期只需短短几个小时，保证即可稳定上手。而厂内主管接受全面的培训，也只须一至两天即可，如此简易化的焊接系统，从此让老板不需再为请不到专业焊工而烦恼。
- 焊接品质佳、速度快又稳定，例如SUS板厚8mm焊速可达600mm/min；SUS板厚10mm焊速可达450mm/min, SUS板厚12mm焊速可达300mm/min 以上。
- 大幅简化生产制程，免填料、全渗透焊接技术免去繁杂的刨边、铲除、清根的工作，可以节省大量的工作时间、劳力、能源和成本。
- 不锈钢14mm以下免刨边，可减少送丝填料，甚而不用送丝填料。
- 焊缝的品质和标准可符合国家一级标准(前置作业须依规范)。

- This is a new-tech welding machine, which doesn't require very skilled personnel to operate. After a few hours training, a normal welder can easily make a great welding job with the machine.

Excellent and stable quality with a very high welding speed.

- The welding speed can be as high as 600mm/min for 8mm thickness, 450mm/min for 10mm thickness, and 300mm/min for 12mm thickness of Stainless Steel.

Simplifying the welding procedure. No edge planning,

- grooving, and back gouging is needed before and after welding, which can eliminate a lot of working hour, energy, and cost of material.

Heat input is greatly reduced while the welding speed is

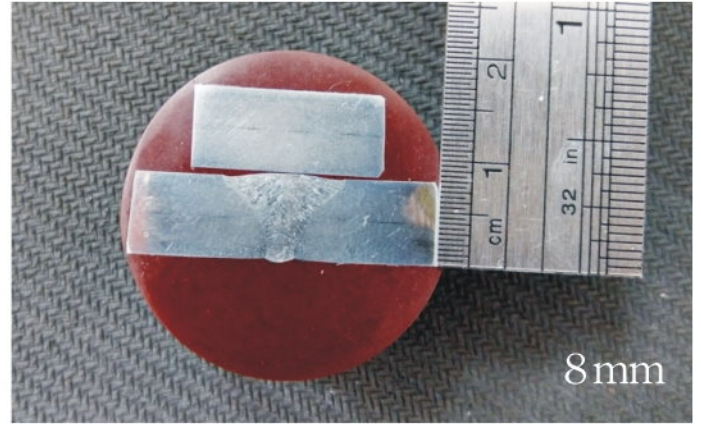
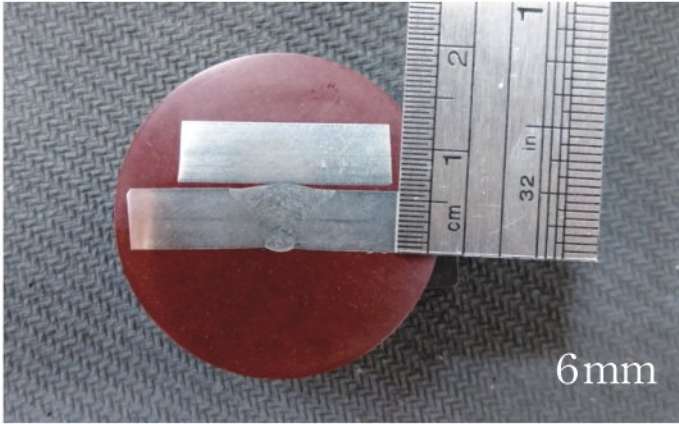
- dramatically increased, and that will also result in less of working piece.

- Stainless steel < 14mm of thickness can be welded without grooving in advance, so operators can reduce or even eliminate the amount of wire.

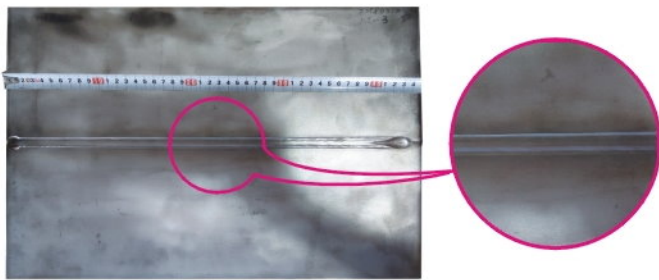


型号	Model	TBT-800
焊接电流	Welding Current	20~800A
负载电压	Loaded Voltage	10~40VDC
使用率	Duty Cycle	100%
定格入力	Input Power	32KVA
尺寸	Dimensions	820x590x1000mm
重量	Weight	270kg

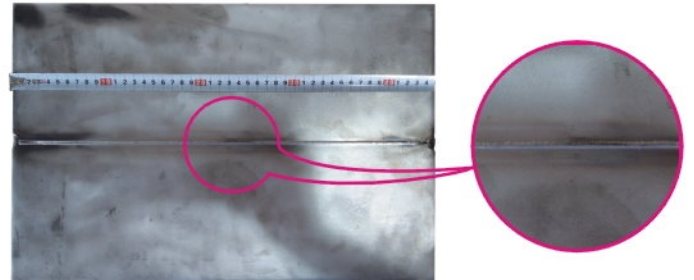
不锈钢焊接试片 Stainless Steel Welding Specimen



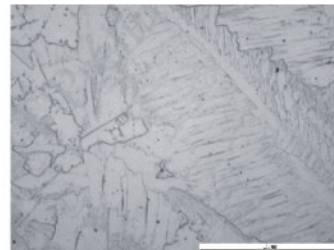
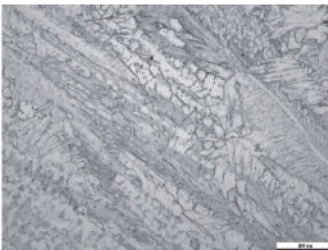
■ 正面焊道 Front view



■ 背面焊道 Back view



焊道金相组织 Microstructure



拉力测试 Tensile Test



	降伏强度 (N/mm ²)	抗拉强度 (N/mm ²)	伸长率 (%)
量测值	341.8	623.8	58.3
规范值	>205	>520	>40
结果	合格	合格	合格

测试方法 Standard : CN2111(1996)

折弯测试 Bend test



正弯背弯无裂痕
No cracks on either way

SGS
材料工业检测实验室

TAF
Testing Laboratory

TAF
Testing Laboratory

试验报告

品名: 不锈钢焊接试片
规格: 6mm / 8mm
材质: SUS304 / SUS316L
测试项目: 拉力测试, 折弯测试

试样编号	直径 (mm)	厚度 (mm)	屈服强度 (N/mm ²)	抗拉强度 (N/mm ²)	伸长率 (%)
C	6.00	1.60	341.8	623.8	58.3
D	8.00	2.00	341.8	623.8	58.3

折弯测试: 180° 合格

检验合格报告
Qualified Inspection Certificate

检验合格报告
Qualified Inspection Certificate

工厂配置参考 Optional Automation



本焊接设备可轻易配置于龙门式、边梁式、压床式、十字臂...等自动化工装上。
Optional automation, such as gantry, side beam, column and boom, is also available upon request.



台灣電漿股份有限公司
TAIWAN PLASMA CORP.

<http://www.plasma.com.tw>

總公司：高雄市大寮區(萬大工業區)農場路222號

Head Office: No.222, Nong-Chang Rd., Da-Liao Dist.,

Kaohsiung 831, Taiwan

Tel: +886 7 7876722 Fax: +886 7 7876756

E-mail: info@plasma.com.tw

北區辦事處：桃園市龜山區復興二路131巷78號

Tel: +886 3 3978550 Fax: +886 3 3978560

經銷商

广东分公司：广东省佛山市禅城区华南金谷一期
首层20号

Tel: +86 757-83935381

Fax: +86 757 83933385